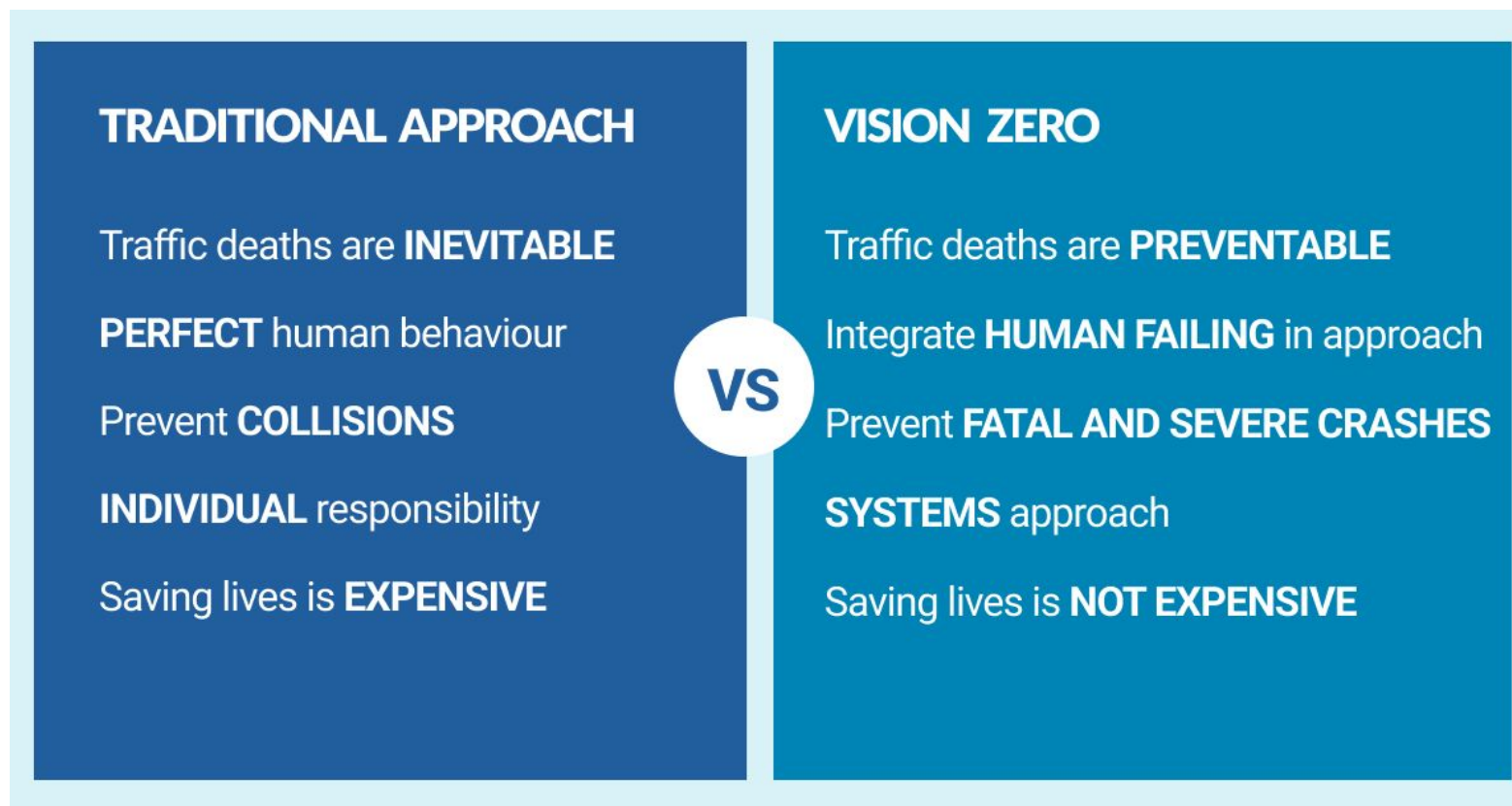


Deb's Charge to presenters:

- 1. What was the process to create your plan and what goals/action are in the plan.
- 2. What is the relationship to local municipalities in this process? Is there cross county collaboration?
- 3. How can advocates best participate in this process. What is your plan for community engagement?
- 4. How will the way you develop these plans help lay the basis for the next phase of implementation?
- 5. What should municipalities do to build on the county plans?
- 6. Did any of the municipalities apply for supplemental SS4a this round?
- 7. What other funding strategies should we be looking at to support these plans and proposed implementation projects.

VISION ZERO

A strategy to eliminate all traffic fatalities and severe injuries, *while increasing safe, healthy, equitable mobility for all.* – VZ Network



VISION ZERO NETWORK



Middlesex County Vision Zero Action Plan

JULY 21, 2022

BOARD OF COUNTY COMMISSIONERS
ADOPT A VISION ZERO PLEDGE

AUGUST 10, 2022

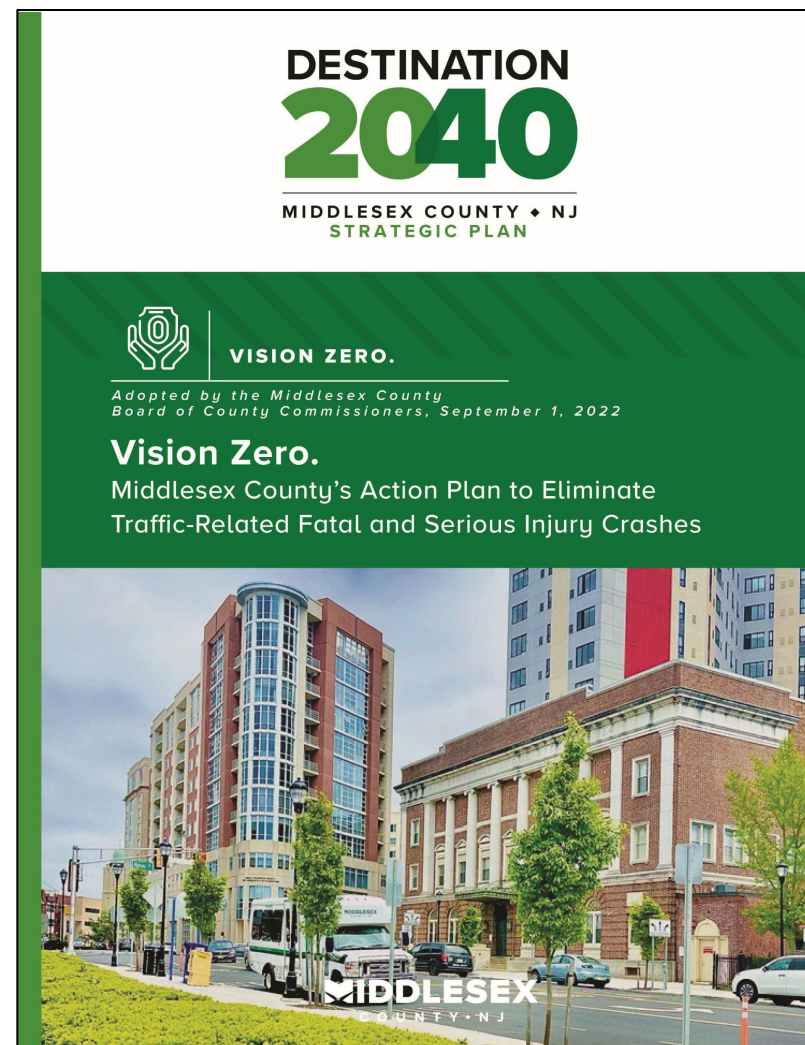
VISION ZERO PARTNERSHIP KICKOFF
MEETING

SEPTEMBER 1, 2022

BOARD OF COUNTY COMMISSIONERS
ADOPT THE VISION ZERO ACTION PLAN

SEPTEMBER 15, 2022

MCOP SUBMITTED OUR USDOT SAFE
STREETS AND ROADS FOR ALL (SS4A)
IMPLEMENTATION GRANT APPLICATION



Vision Zero Pledge

Middlesex County is committed to eliminating traffic fatalities and serious injuries on roadways in the county by 2040.

Middlesex County will work in partnership with municipalities, agencies, and other stakeholders to achieve this goal.

-Middlesex County Board of County Commissioners

July 21, 2022



VISION ZERO PARTNERSHIP

Leadership Committee

COUNTY AND MUNICIPAL ELECTED LEADERS

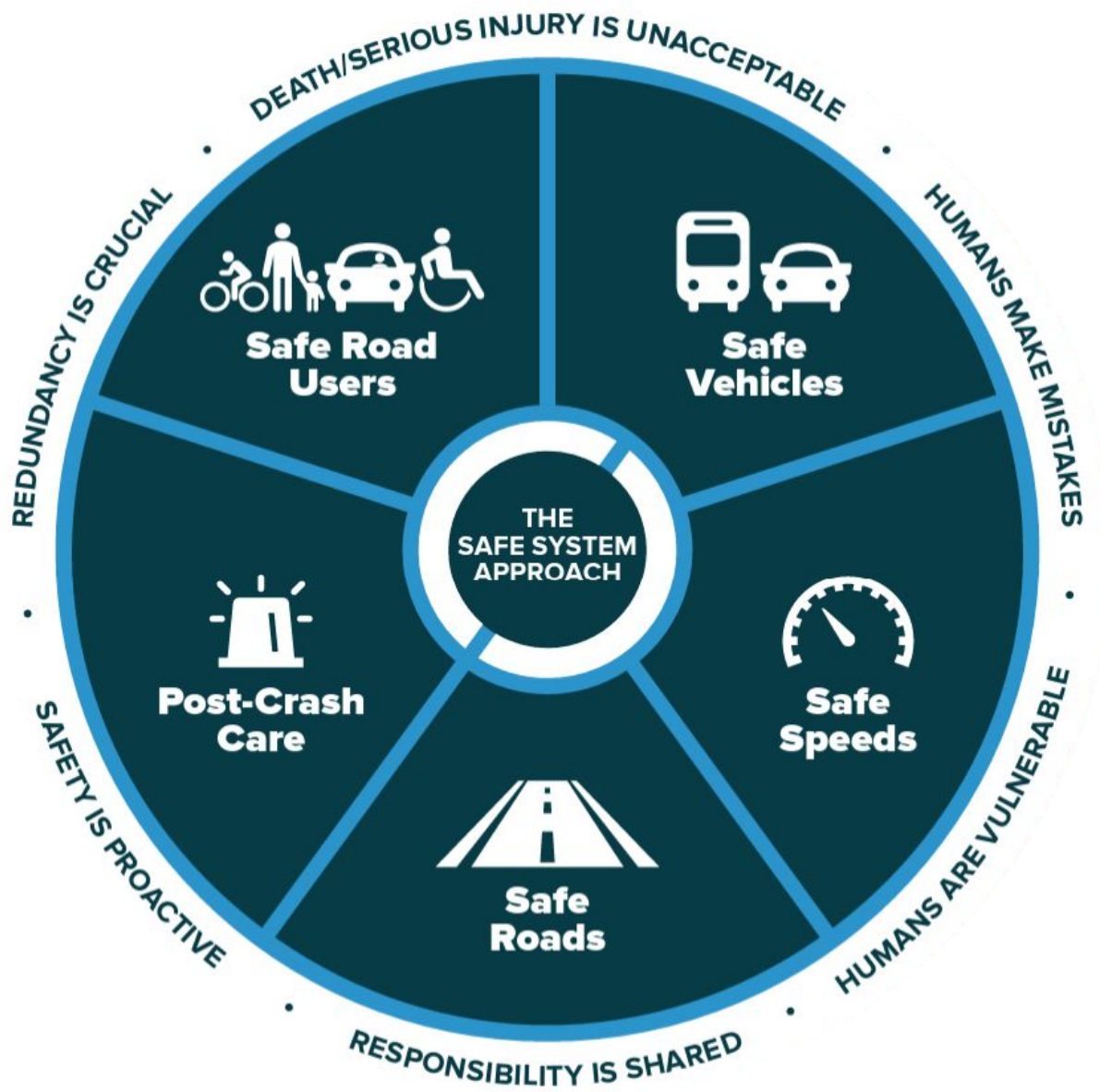
Culture of Safety Working Group

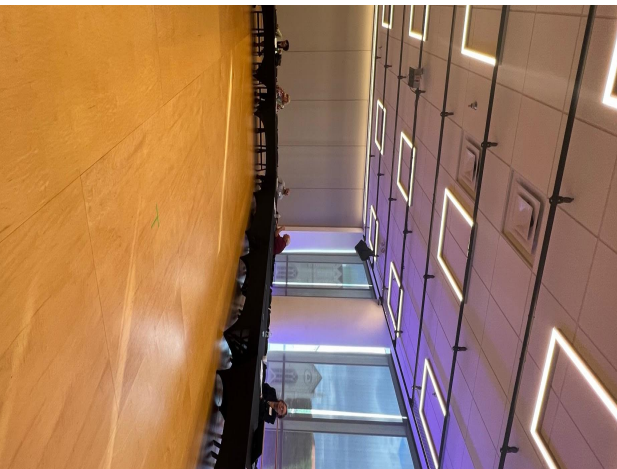
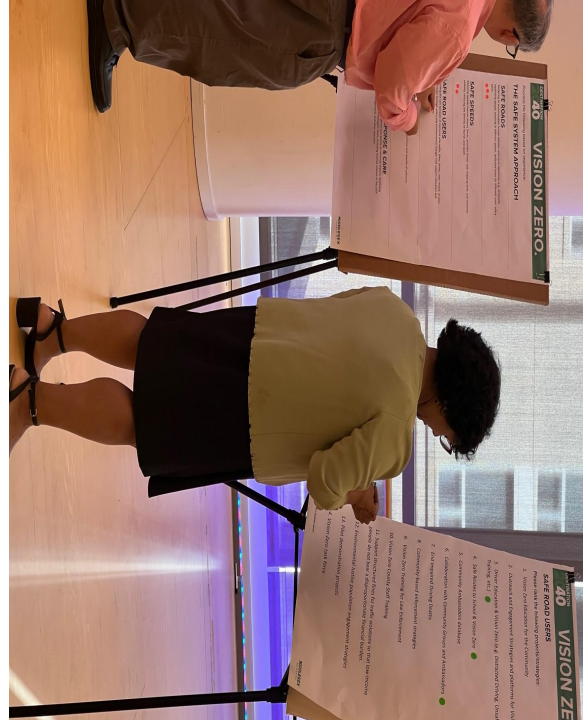
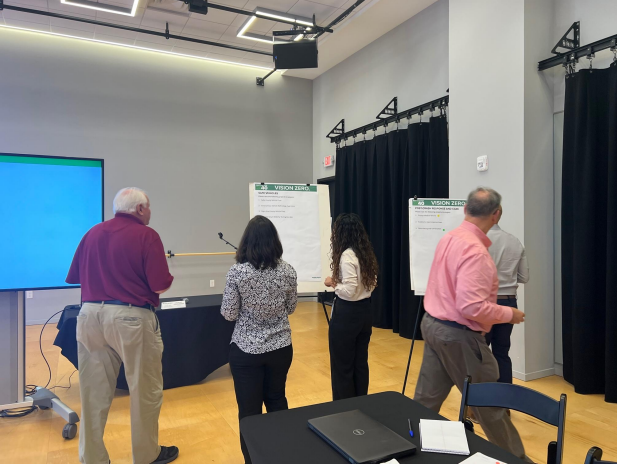
Complete Streets Working Group

FIRST RESPONDERS
PLANNERS
ENGINEERS
PUBLIC WORKS
HEALTH OFFICIALS
PROSECUTOR'S OFFICE
KMM
NJ DOT
NJTPA
AAA
AARP
OTHER STAKEHOLDERS

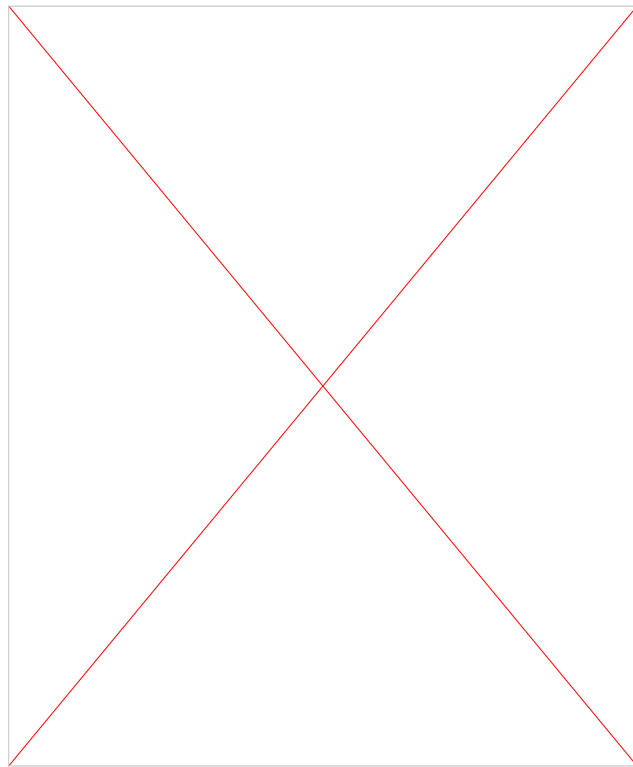
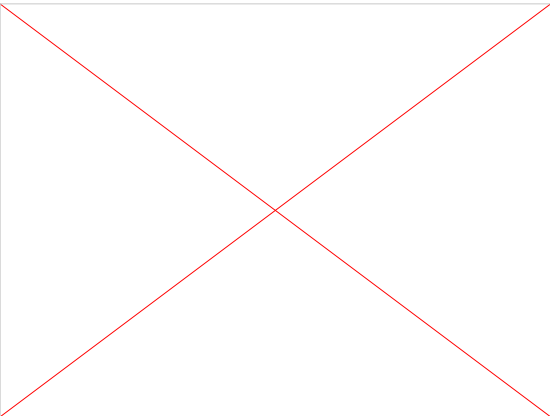


THE SAFE SYSTEMS APPROACH





CULTURE OF SAETY PROJECT PRIORITIZATION		
SAFETY ELEMENT	PROJECT/STRATEGY	# OF RESPONSES
SAFE ROAD USERS	Vision Zero Education for the Community	8
	Outreach and Engagement Strategies and Platforms	4
	Driver Education and Vision Zero	9
	Safe Routes to School and Vision Zero	6
	Community Ambassadors database	0
	Collaboration with Community Groups and Ambassadors	1
	End Impaired Driving Deaths	5
	Community-based enforcement strategies	4
	Vision Zero Training for Law Enforcement	5
	Vision Zero County Staff Training	1
	Support structured fines for traffic violations so that low-income people do not bear a disproportionate financial burden.	1
	Environmental justice population engagement strategies	4
	Pilot Demonstration Projects	5
	Vision Zero task Force	3
SAFE VEHICLES	Safer County Vehicle Fleet	6
	Autonomous Vehicle Technology Task Force	1
	Right-Size County Vehicle Fleet	7
	DataCity Smart Mobility Testing Corridor	4
POST-CRASH RESPONSE	Prompt Medical Service	7
	Establish a rapid response team	5
	Data sharing and coordination	9



	PROJECT/STRATEGY	# OF RESPONSES
Safe Roads	Intersection Enhancements and Redesign	12
	Bicycle and Pedestrian Network Projects	8
	Complete Streets Networks	6
	County Roundabout Pilot Program	6
	Safety Countermeasures Program	4
	County Complete Streets Design Guide	4
	Design Standards and Guides	5
	Coordinate with the NJ SHSP	1
	Follow State Guidance Documents	0
	Curbside Management Program	4
	Multimodal Planning and Transit	4
	Funding for Low-Cost Improvements	8
	Regular Program Updates	0
	Ongoing Data Collection and Analyses	7
Pilot/Demonstration Projects	6	
Road Safety Audits	7	
Safe Speeds	Speed Management Policy	6
	Roadway Design Standards for Speed Management	6
	Traffic Calming Policies	11

What Defines Success

No More Deaths

No More Serious Fatal Injuries

Speed Limit Reduction

Transparency

Fewer Cars on the Road

Behavioral Changes

Shared Rides

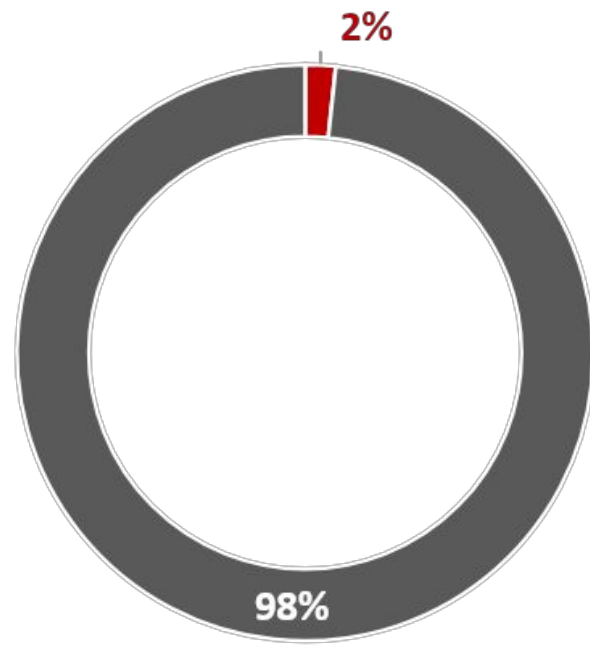
Road Diets

Level of Service

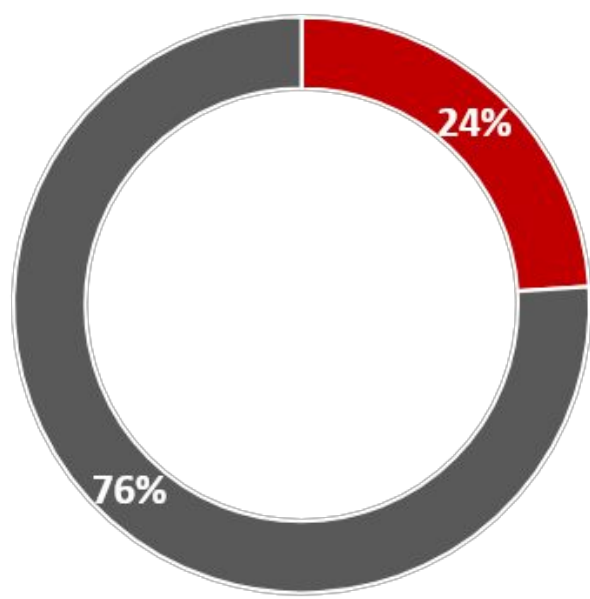
Partnership- Center for Advanced Infrastructure and Transportation (CAIT)

2010-2019 Crashes in Middlesex County

*Includes all roadway jurisdictions from 2010-2019



291,440 Traffic Crashes



1,434 Fatal and Serious Injury Crashes (FSIs)

Bicycle and Pedestrian Crashes
5,014 *Bicycle and Ped. Crashes*

Vehicle Crashes
286,477 *Vehicle Crashes*

Bicycle and Pedestrian Crashes
347 *Bicycle and Ped. FSI Crashes*

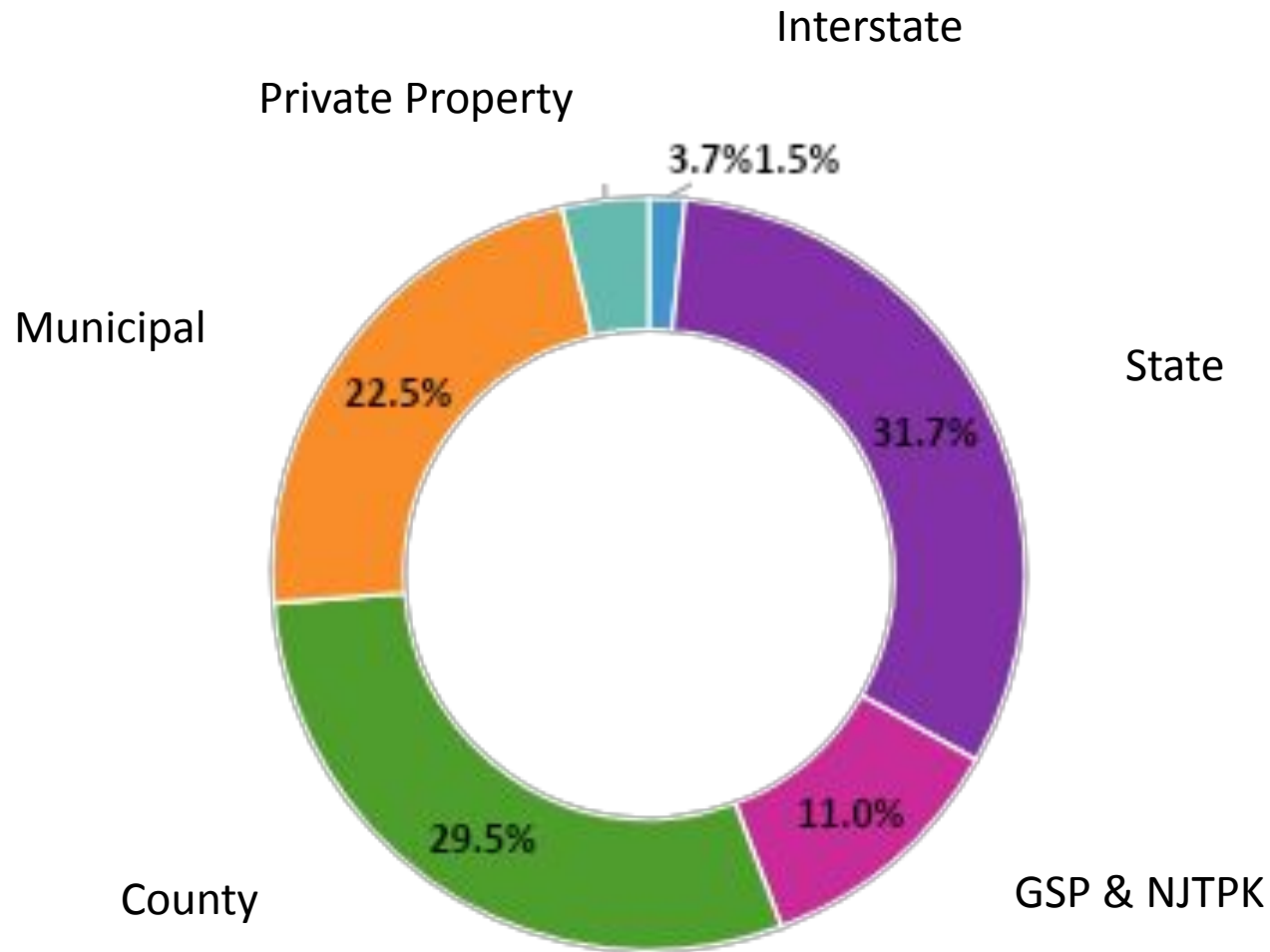
Vehicle Crashes
1,087 *Vehicle FSI*

On Average, the County Saw:

- 2** Crashes/Hour
- 4** Fatalities/Month
- 8** Incapacitations/Month
- 23** Injuries/Month



FATAL & SERIOUS INJURY CRASHES BY ROADWAY JURISDICTION



2010-2019 Crashes in Middlesex County

* Includes all roadway jurisdictions from 2010-2019



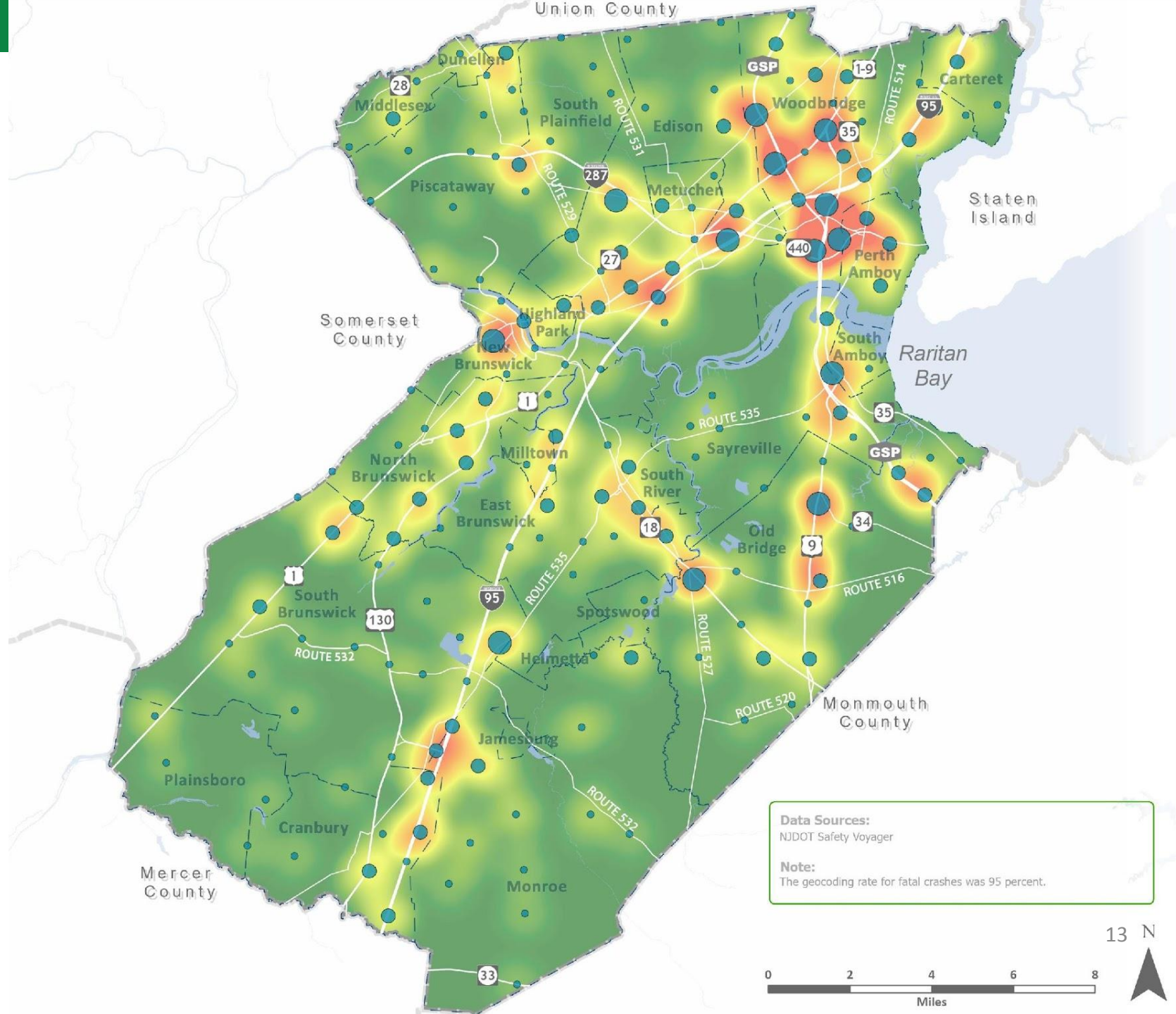
FATAL CRASHES HOTSPOT MAP

2010-2019

Number of Fatal Crashes

- 1 - 2
- 3 - 5
- 6 - 9

Fatal Crashes per Square Mile



SERIOUS INJURY CRASHES HOTSPOT MAP

2010-2019

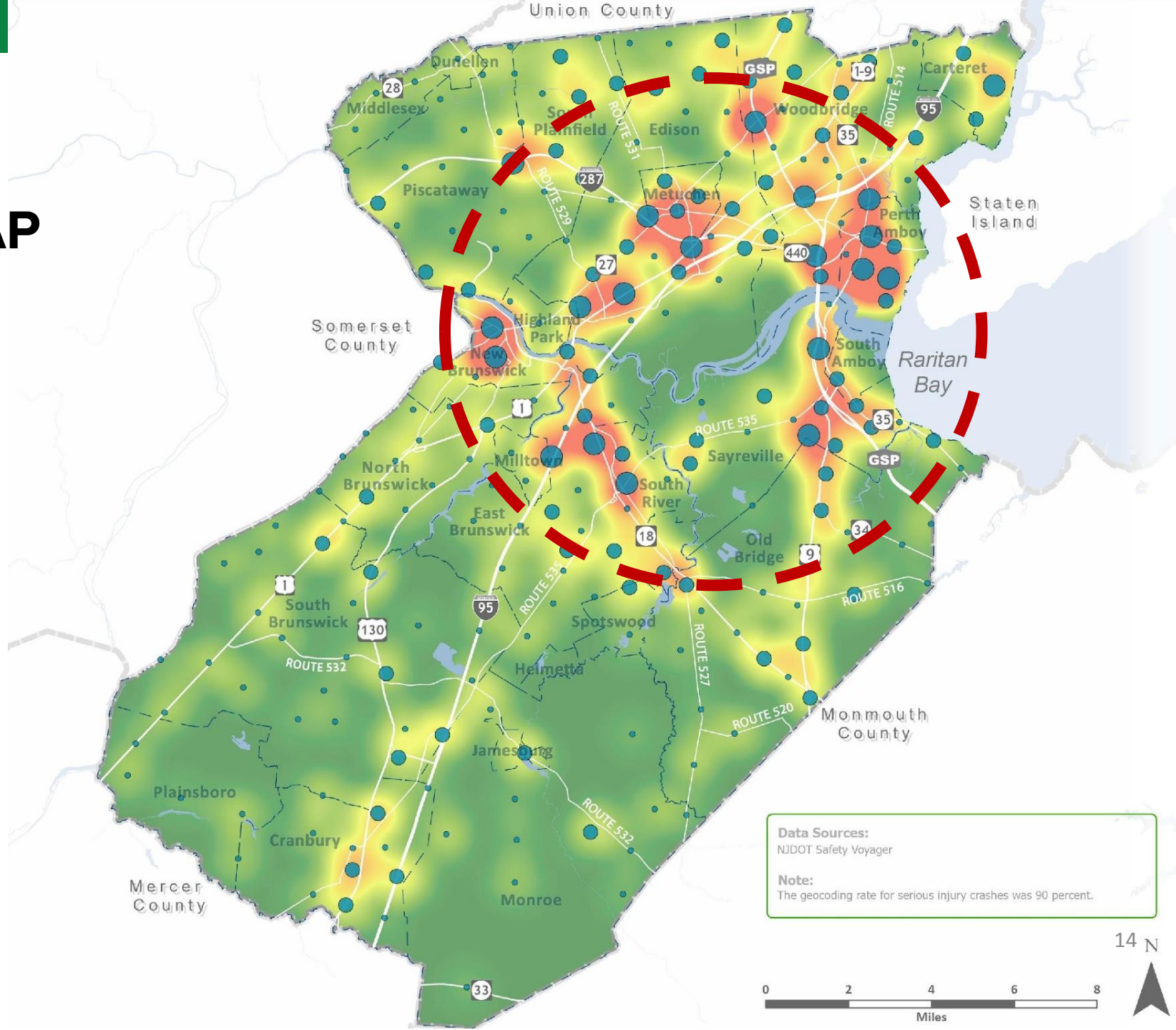
Number of Serious Injury Crashes

- 1 - 3
- 4 - 7
- 8 - 15

Serious Injury Crashes per Square Mile

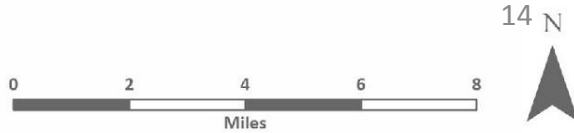
High : 17.4

Low : 0

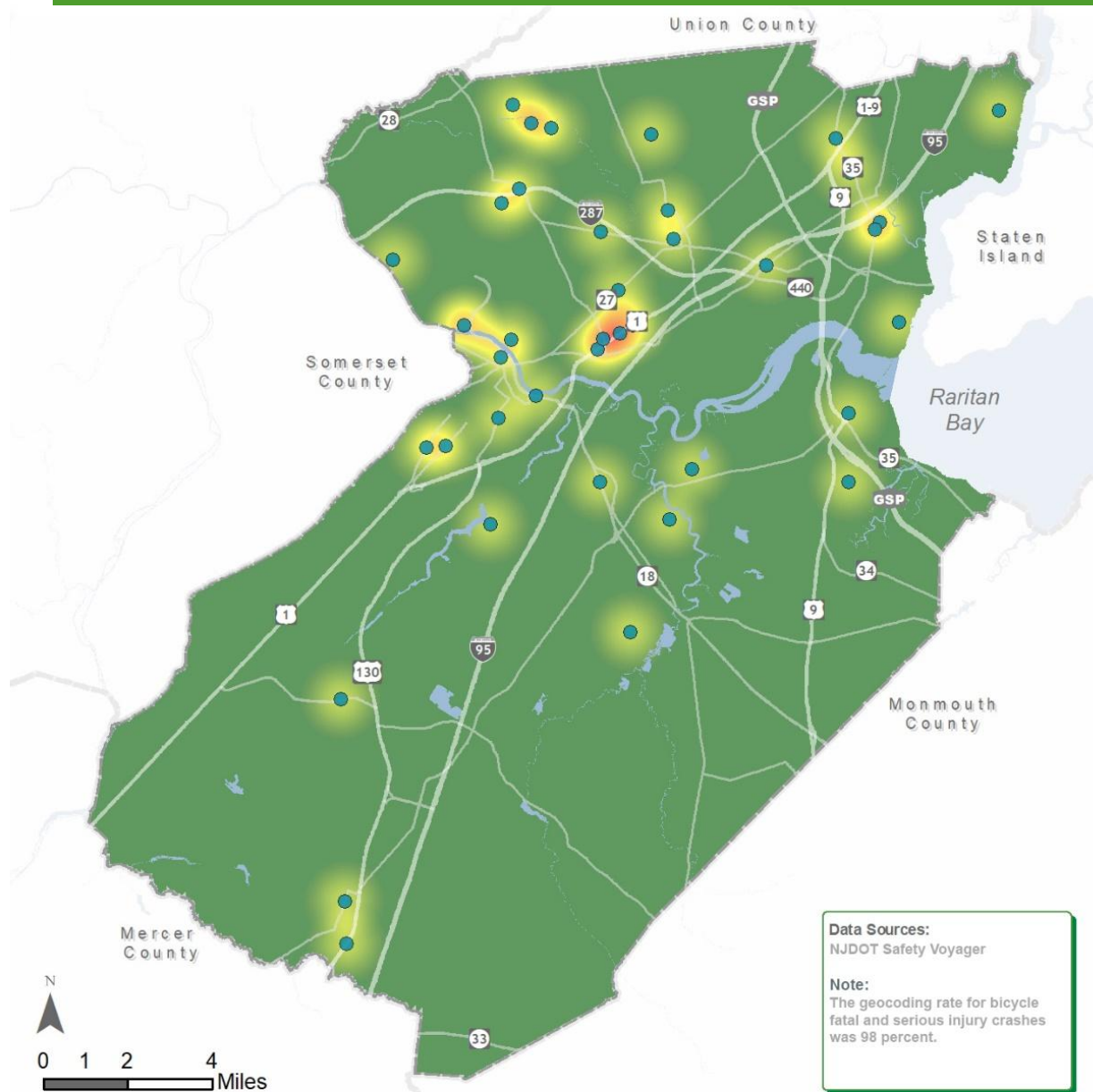


Data Sources:
NJDOT Safety Voyager

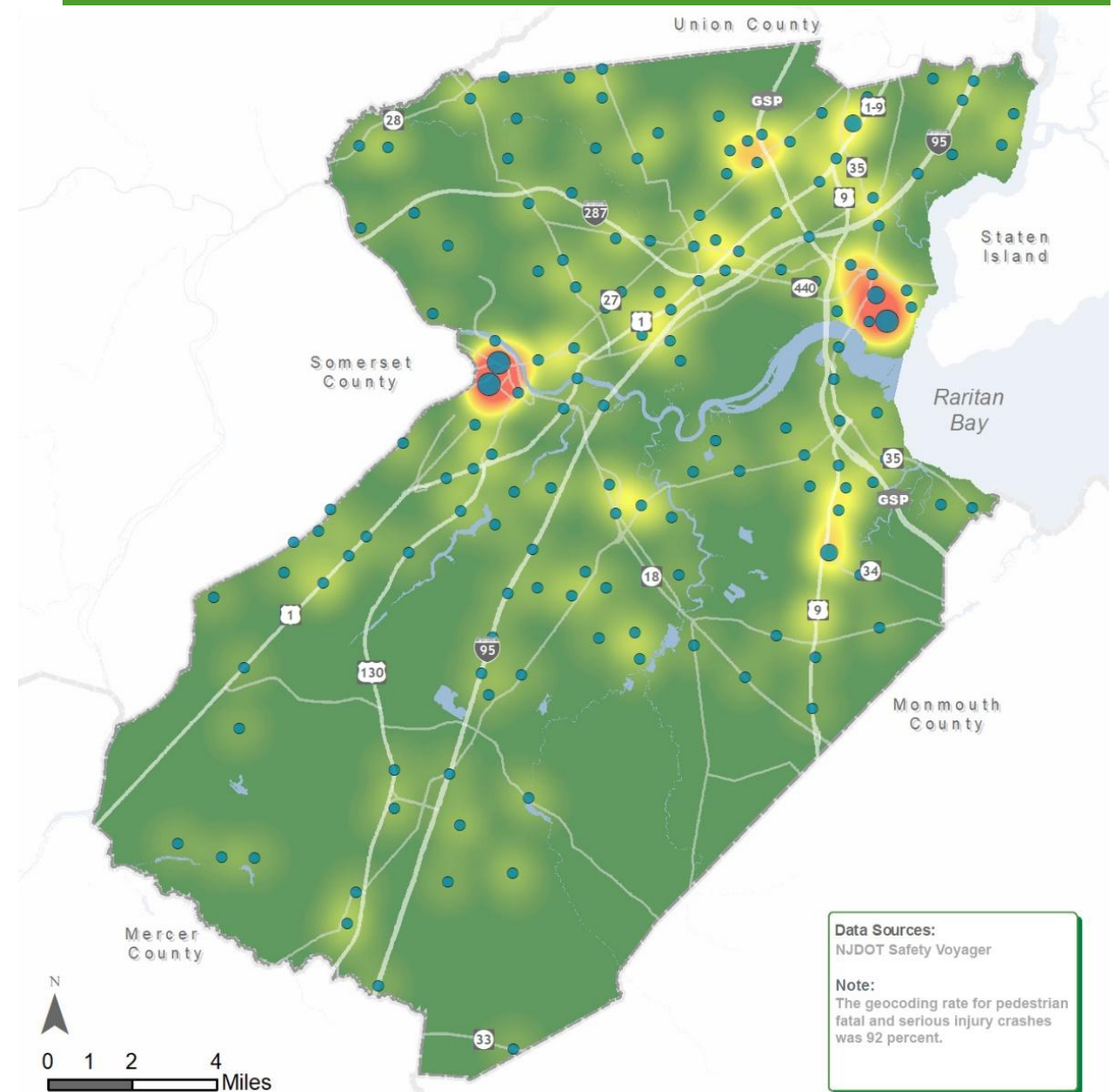
Note:
The geocoding rate for serious injury crashes was 90 percent.



Bicycle Fatal & Serious Injury Crash Hotspots 2010-2019



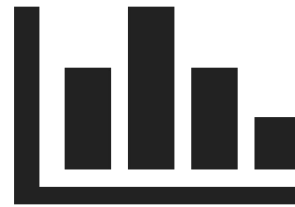
Pedestrian Fatal & Serious Injury Crash Hotspots 2010-2019



HIGH INJURY NETWORK (HIN)



Identifies roadway locations that account for a disproportionate share of **fatal and serious injury crashes (FSIs)**.



Data driven



Helps prioritize investments



Equity



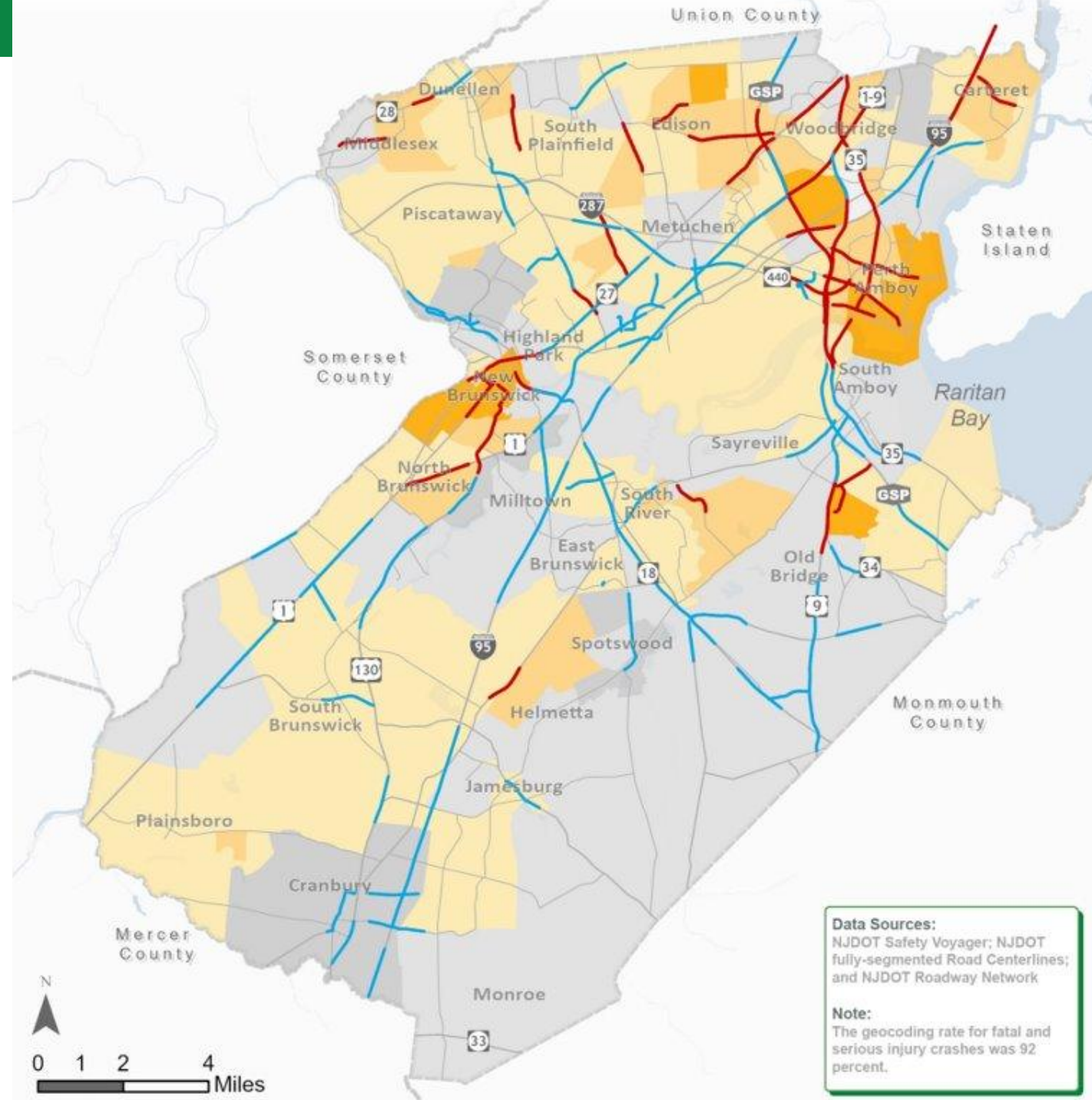
HIN BY INDICATORS OF POTENTIAL DISADVANTAGE

Weighted High Injury Network, 2010-2019

- In the Top 2 IPD Intervals
- Not In the Top 2 IPD Intervals

Indicators of Potential Disadvantage (IPD) by Census Tract

- Well Below Average (< -1.5 Std. Dev.)
- Below Average (-1.5 - -0.5 Std. Dev.)
- Average (-0.5 - 0.5 Std. Dev.)
- Above Average (0.5 - 1.5 Std. Dev.)
- Well Above Average (> 1.5 Std. Dev.)





2022 USDOT NATIONAL ROADWAY SAFETY STRATEGY

SS4A





ZERO

Fatalities & Serious Injuries by 2040

WHAT WILL SUCCESS LOOK LIKE

-GOALS-

1. SAFER STREETS

- Design streets and transportation networks to be safe and comfortable for all users.

2: SAFER SPEEDS

- Set roadway speed limits based on surrounding land use and activities focusing on vulnerable users.

3: SAFER ROAD USERS

- Foster a culture of safety, responsibility, and awareness within Middlesex County.

4: SAFER VEHICLES

- Utilize the latest vehicle systems and safety features for the County fleet. Support the development of new safety features.



WHAT WILL SUCCESS LOOK LIKE

-GOALS-

5: POST CRASH RESPONSE AND CARE

- Improve crash response time and data collection.

6: FOCUS ON EQUITY

- Ensure equitable distribution of all traffic safety investments and benefits using a data-based approach

7: DEVELOP STRONG PARTNERSHIPS

- Implement the Vision Zero Action in collaboration with municipalities, non-profits, and state and regional agencies.

8: COMMUNITY ENGAGEMENT

- Work with Middlesex County community members to obtain feedback.



Questions and Discussion





VISION ZERO.

Middlesex County, NJ Vision Zero Action Plan

7/27/23 NJBWC's SAFE Network Webinar

Michael Dannemiller, PE
Supervising Engineer
Middlesex County Office of Planning



REDESIGN THE ROAD

Livingston Avenue, New Brunswick, NJ



- NARROW LANES
- HIGH VISIBILITY CROSSWALKS
- DAYLIGHTING
- ADA



VISION ZERO.

Overview

1. Introduction
2. Vision Zero 101
3. Targeting The Problem
4. How Is Vision Zero Implemented?
5. What Will Success Look Like?
6. Safe Street And Roads For All (Ss4a)
7. Partnership Overview
8. Questions And Discussions
9. Adjournment



VISION ZERO...



Is a strategy to eliminate **ALL** traffic fatalities and severe injuries, while increasing safe, healthy, equitable mobility for all



Views traffic deaths as **PREVENTABLE**



Includes 3 Main Principles: managing speed, centering equity, engaging communities



Saves lives; Saving lives is **INEXPENSIVE**





THE MIDDLESEX COUNTY VISION ZERO PARTNERSHIP

PARTNERSHIP MEMBERSHIP AND STRUCTURE

The Partnership will include a **Leadership Committee** made up of elected officials from the County's 25 municipalities. To facilitate the development of the Action Plan and promote discussion of critical topics in detail, two working groups of stakeholders will support the Leadership Committee. Each working group will be chaired by a member of the Leadership Committee.

- **Complete Streets** Working Group – This group will focus on engineering solutions, including street design and traffic calming.
- **Culture of Safety** Working Group – This group will focus on education, enforcement and regulation, and post-crash emergency response.

