



EXPERIMENTAL POP-UPS: Tactical Urbanism in Greater Philadelphia

January 25th, 2024 - SAFE Network

Cassidy Boulan, AICP
Associate Manager, Office of Transit, Bicycle, and Pedestrian Planning

EXPO

EXPERIMENTAL POP-UPS

Tactical Urbanism

Low-cost, short-term or quick build projects that spark long-term change.

Expo is DVRPC's tactical urbanism support program.

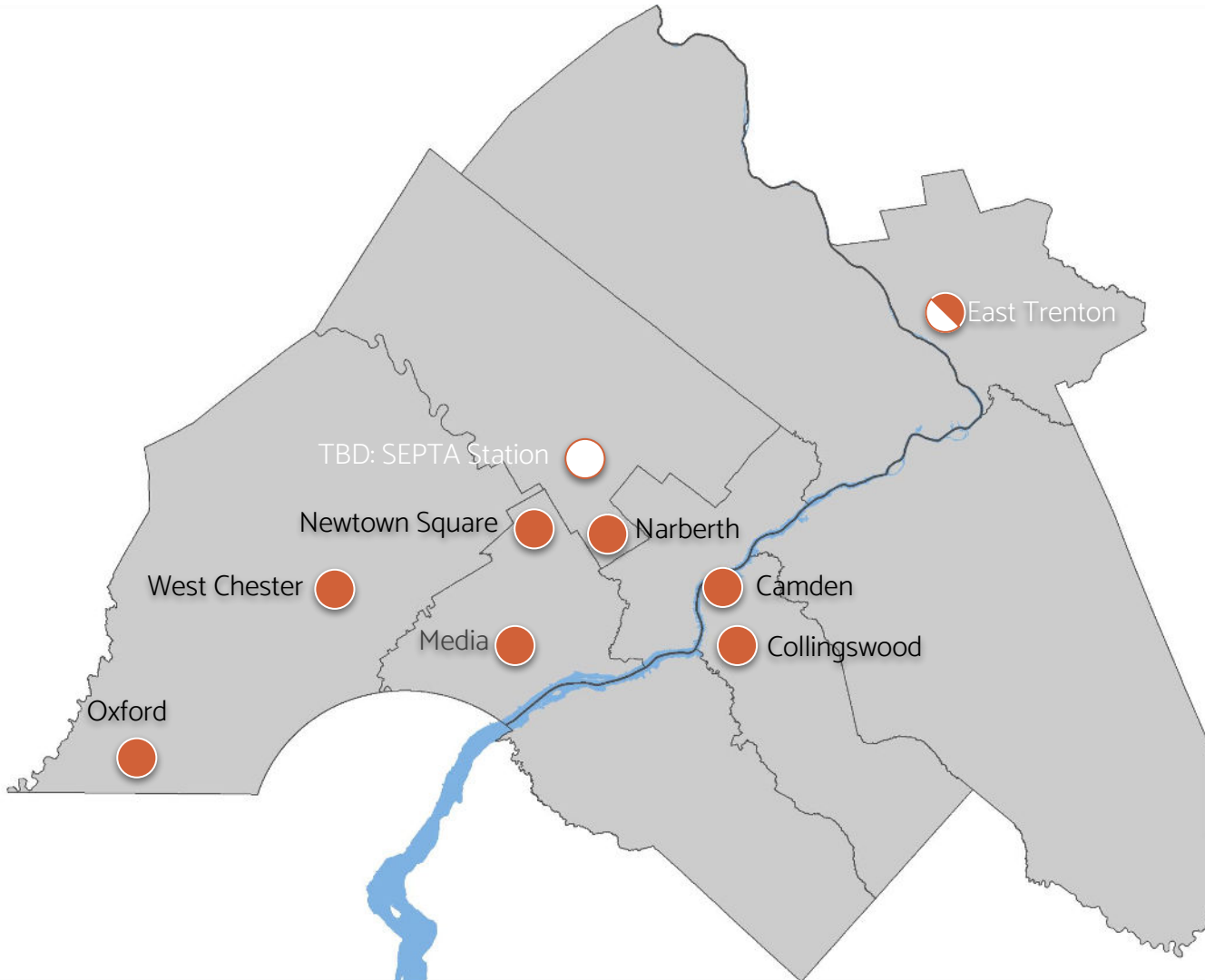


Expo Projects

○ Where we've
popped up

● Where we're
popping up
soon

◐ Ongoing
partnerships



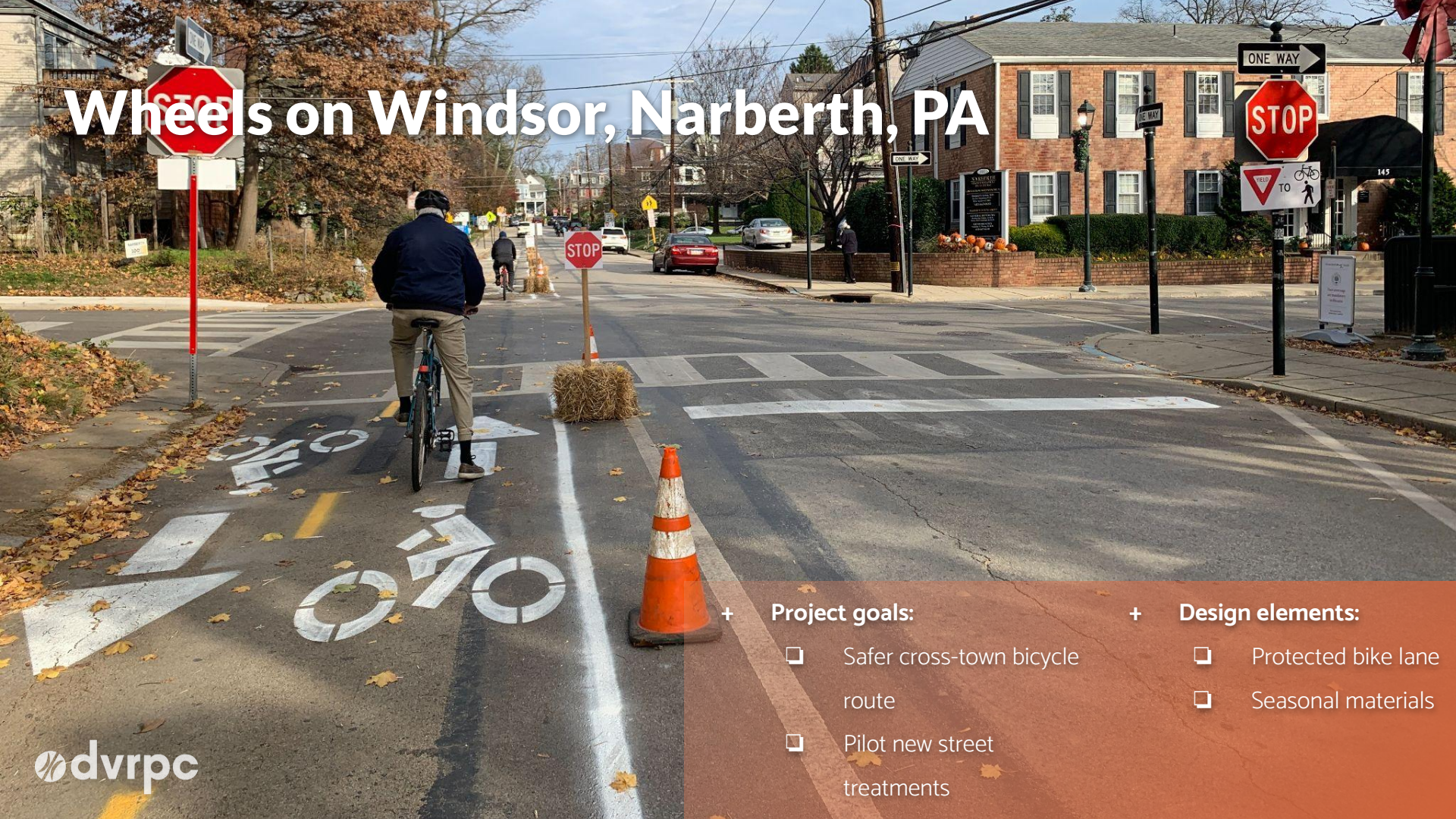
Ingredients for Tactical Urbanism Success

- ❑ Find the right project
- ❑ Coordination is key
- ❑ Don't overlook design
- ❑ Make it more than just a transportation pilot
- ❑ Monitor and make changes

Find the Right Project

- ❑ Derived from a plan and/or public process
- ❑ Ambitious - but not too ambitious
- ❑ Low risk/high reward
- ❑ Reasonable resources (people-power, supplies, length)

Wheels on Windsor, Narberth, PA



+

Project goals:

- Safer cross-town bicycle route
- Pilot new street treatments

+

Design elements:

- Protected bike lane
- Seasonal materials

WHEELS ON WINDSOR

PREP AND SIGN PLAN

Cover parking meters
Using plastic bags or other opaque material, cover the parking meters on the north side of Windsor Ave. between Forrest Ave. and Narberth Ave. to indicate no parking.

Place "Except Bikes" sign on existing "Do Not Enter" sign
Existing sign is located at the northwest corner of Windsor Ave. & Narberth Ave.



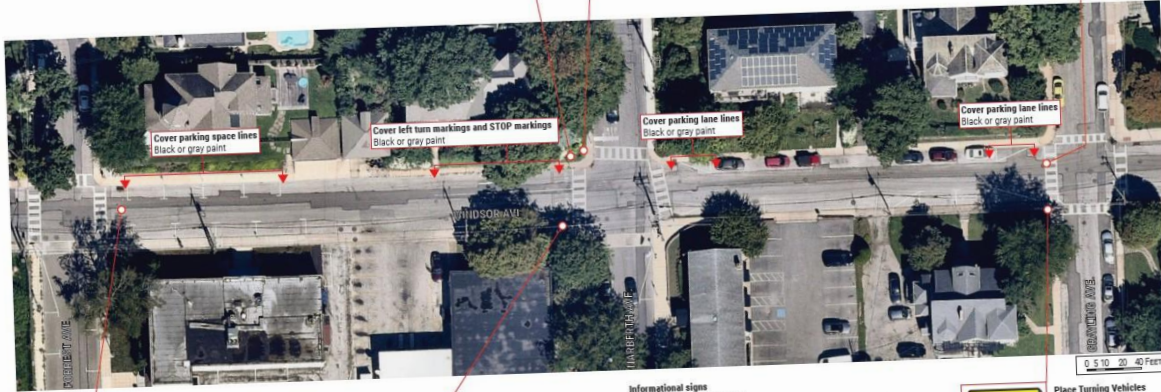
Place Turning Vehicles Yield to Bikes/Peds sign
Must be located on northwest corner of Windsor Ave. & Narberth Ave.

Must be visible to drivers traveling south on Narberth Ave.

Place Bike Lane Ahead sign and Bike Lane Ends sign
Use a straw bale in the bike lane buffer to place signs at beginning/end of bike lane.



Bike Lane Ahead sign must face west.
Bike Lane Ends sign must face east



Place Bike Lane Ahead sign and Bike Lane Ends sign
Use a straw bale in the bike lane buffer to place signs at beginning/end of bike lane.

Bike Lane Ahead sign must face west.

Bike Lane Ends sign must face east



Place Turning Vehicles Yield to Bikes/Peds sign
Located on southwest corner of Windsor Ave. & Narberth Ave.

Must be visible to drivers traveling east on Windsor Ave.

Informational signs

There are 2 informational sign designs, and 2 copies of each design. Each printed sign should be placed on a sandwich board. Each block should get one of each sign.

The sandwich boards may be placed either on the sidewalk or in the buffer, but should be oriented to be visible to cyclists and pedestrians.

Info. Sign 1

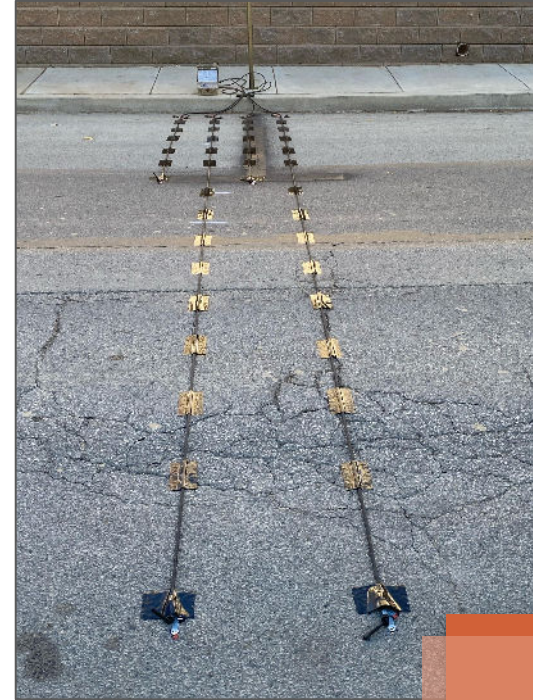


Info. Sign 2



Place Turning Vehicles Yield to Bikes/Peds sign
Located on southwest corner of Windsor Ave. & Grayling Ave.

Must be visible to drivers traveling east on Windsor Ave.



Design Support

Traffic Counts

Atlantic Ave, Collingswood, NJ



+ Project goals:

- Improve bicycle and pedestrian access
- Pilot new street treatments

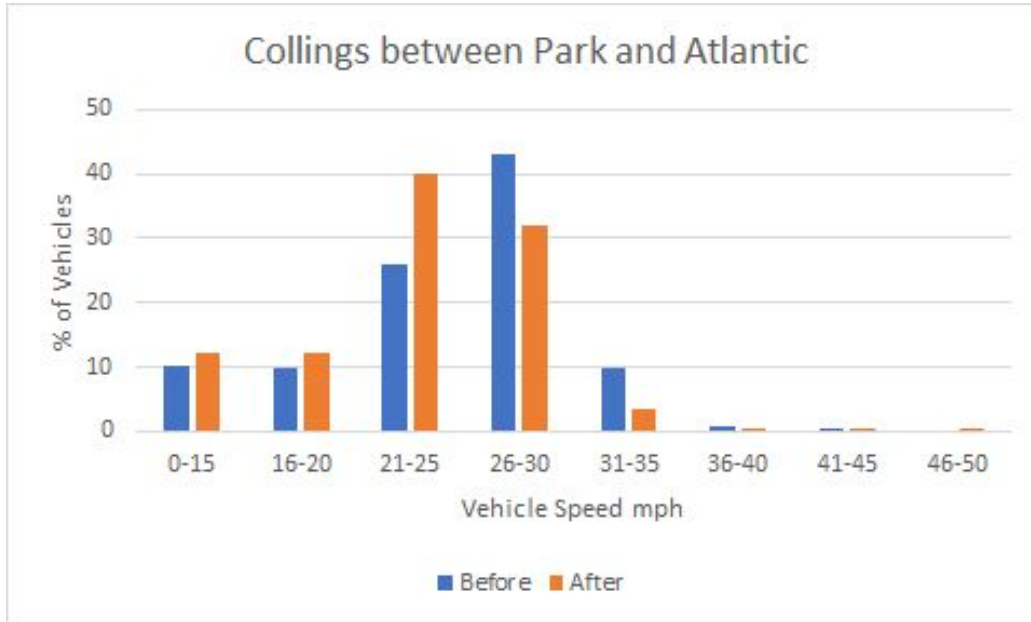
+ Design elements:

- Curb extensions
- Advisory bike lanes
- New crosswalks



Make it more than just transportation

Monitor and make changes



On Atlantic Ave, about 7% fewer vehicles were going above 25 MPH once the EXPO project was on the ground.

19% fewer vehicles on the Collings Ave were driving above 25 MPH.



dvrpc



East Trenton Neighborhood, Trenton, NJ

+ Project goals:

- ❑ Improve pedestrian crossings and visibility
- ❑ Slow vehicles on Clinton Ave

+ Design elements:

- ❑ Curb extensions
- ❑ Planters
- ❑ Art
- ❑ New crosswalks

Working Group

Purpose

- ❑ Meet weekly to co-create project that improves walkability and bikeability
- ❑ Collaborate on goals, data collection, design, implementation, communications

Roles

- ❑ DVRPC: Project management, evaluation, coordination, design
- ❑ Municipality: Guide project to align with muni goals and provide in-kind support
- ❑ TMA (*optional*): Marketing, surveys, implementation volunteers
- ❑ Residents/advocates: Design input, outreach, implementation volunteers

I want one!

- ❑ Brainstorm project locations, partners and funding
- ❑ **Build municipal support**
- ❑ Set up an initial call
- ❑ Fall 2024 would be earliest start (for full project)
- ❑ Level of DVRPC support can vary

Brass Tacks

- ❑ **Budget** - \$5,000 - \$15,000
- ❑ **Lead time** - 3-9 months
- ❑ **Lifetime of project** - Two weeks to permanent
- ❑ **How much promotion and outreach?** Lots
- ❑ **Liability issues?** Depends

More info:
dvrpc.org/expo



Contact

Cassidy Boulan: cboulan@dvrpc.org



Credit: Presentation template by Slidesgo