

# Greater Mercer Transportation Management Association

## NJ TRANSIT Part of the Bike & Walk Solution

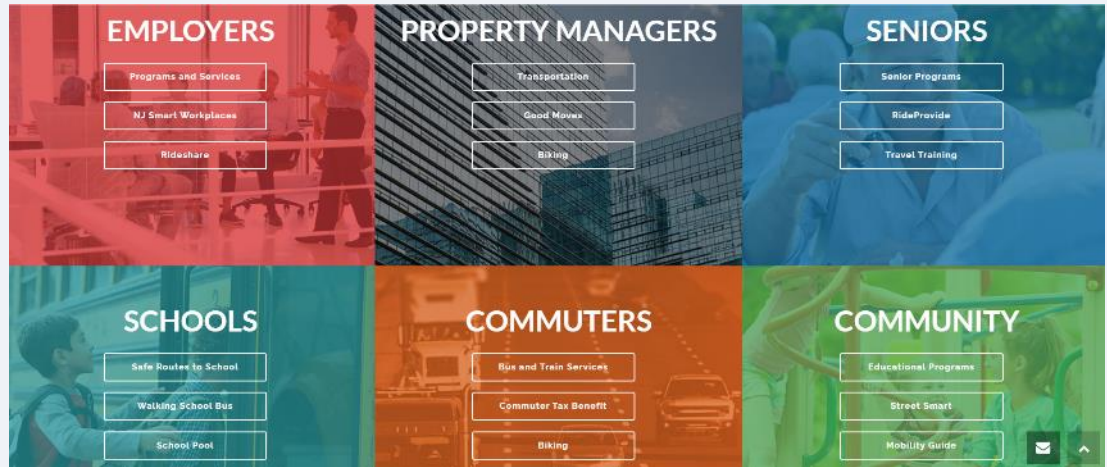
NJBWC, THE SAFE NETWORK

7/23/25



# About GMTMA

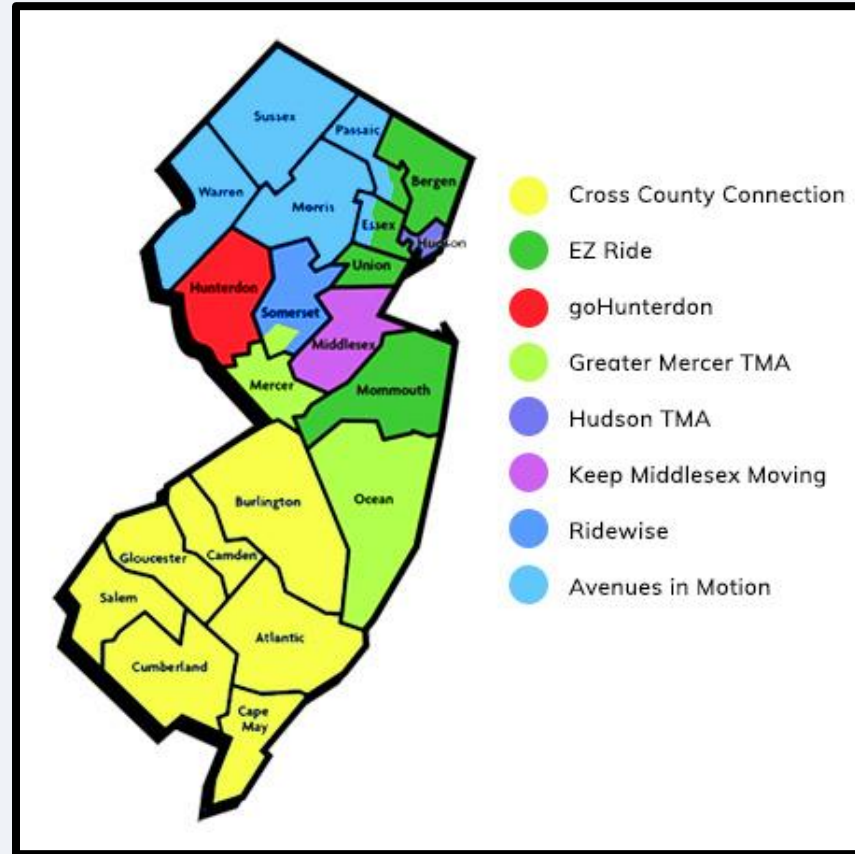
- Non-Profit
- Established in 1984
- One of eight TMAs in NJ



Improve Mobility, Increase Safety, and Further Sustainability

# TMA Council of NJ

<https://www.tmacouncilnj.org/>





- Trip Planning
  - call or email your TMA
- Transit schedule distribution
- Community Events
- Mobility Guides
- Mapping Tools
- Travel Training

Resource Guide to Transportation

## Ocean County Mobility Guide

**KEEPING OCEAN IN MOTION**  
NJ TRANSIT – Ocean Ride – Private Services – Community Transportation Services

JULY 2024




DOWNLOAD



## MERCER COUNTY MOBILITY GUIDE

**MOBILITY GUIDE MERCER COUNTY**  
KEEPING MERCER ON THE MOVE

**A Resource Guide to Transportation**  
Public Transit - Community Transportation Services - Private Services  
Greater Mercer Transportation Management Association

JULY 2024



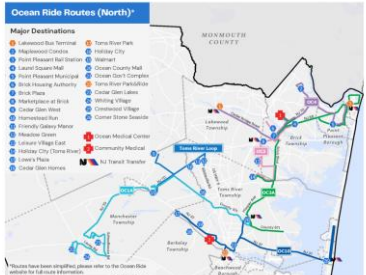

DOWNLOAD



### Ocean Ride Routes (North)\*

Major Destinations

- Lumberton Bus Terminal
- Highway 101
- Highway 102
- Highway 103
- Highway 104
- Highway 105
- Highway 106
- Highway 107
- Highway 108
- Highway 109
- Highway 110
- Highway 111
- Highway 112
- Highway 113
- Highway 114
- Highway 115
- Highway 116
- Highway 117
- Highway 118
- Highway 119
- Highway 120
- Highway 121
- Highway 122
- Highway 123
- Highway 124
- Highway 125
- Highway 126
- Highway 127
- Highway 128
- Highway 129
- Highway 130
- Highway 131
- Highway 132
- Highway 133
- Highway 134
- Highway 135
- Highway 136
- Highway 137
- Highway 138
- Highway 139
- Highway 140
- Highway 141
- Highway 142
- Highway 143
- Highway 144
- Highway 145
- Highway 146
- Highway 147
- Highway 148
- Highway 149
- Highway 150
- Highway 151
- Highway 152
- Highway 153
- Highway 154
- Highway 155
- Highway 156
- Highway 157
- Highway 158
- Highway 159
- Highway 160
- Highway 161
- Highway 162
- Highway 163
- Highway 164
- Highway 165
- Highway 166
- Highway 167
- Highway 168
- Highway 169
- Highway 170
- Highway 171
- Highway 172
- Highway 173
- Highway 174
- Highway 175
- Highway 176
- Highway 177
- Highway 178
- Highway 179
- Highway 180
- Highway 181
- Highway 182
- Highway 183
- Highway 184
- Highway 185
- Highway 186
- Highway 187
- Highway 188
- Highway 189
- Highway 190
- Highway 191
- Highway 192
- Highway 193
- Highway 194
- Highway 195
- Highway 196
- Highway 197
- Highway 198
- Highway 199
- Highway 200



### Bikes and Transit

It's easy to take your bicycle with you on the bus or train. Greater Mercer TMA provides bike lockers at the NJ TRANSIT Point Pleasant Beach station.

**On the Bus**

Most buses used in Ocean County store bikes underneath the bus. Remember these tips for loading and unloading your bike:

- LOADING:** When the driver opens the door, tell him/her you want to take your bike with you. The driver will get off the bus and open the storage compartment underneath.
- UNLOADING:** Remind the driver when getting off that you will need the driver's assistance to retrieve your bike.

Occasionally, regular city street bikes may be used where the bike is stored on a rack secured to the front of the bus.

For more information and usage limitations, consult NJ TRANSIT Bike and Ride or call 877-275-5555.



GREATER MERCER TMA JULY 2024

### RESOURCES FOR WALKING IN MERCER COUNTY

Check out where there are sidewalks and possibly signs in Sidewalks to help you plan your walk.

The Delaware Valley Regional Planning Commission (DVRPC) developed a Pedestrian Portal Explorer where users can explore the availability of sidewalks, crosswalks, and ramps in Mercer County. Visit [walk.dvrpc.org](http://walk.dvrpc.org) or click here to find the Sidewalk Inventory.



Stay healthy, mobile, and confident with the Greater Mercer TMA's Pedestrian Safety Program.

GMTCMA offers a free pedestrian safety program geared specifically to older adults at senior centers, senior housing and other community facilities.

GREATER MERCER TMA JULY 2024

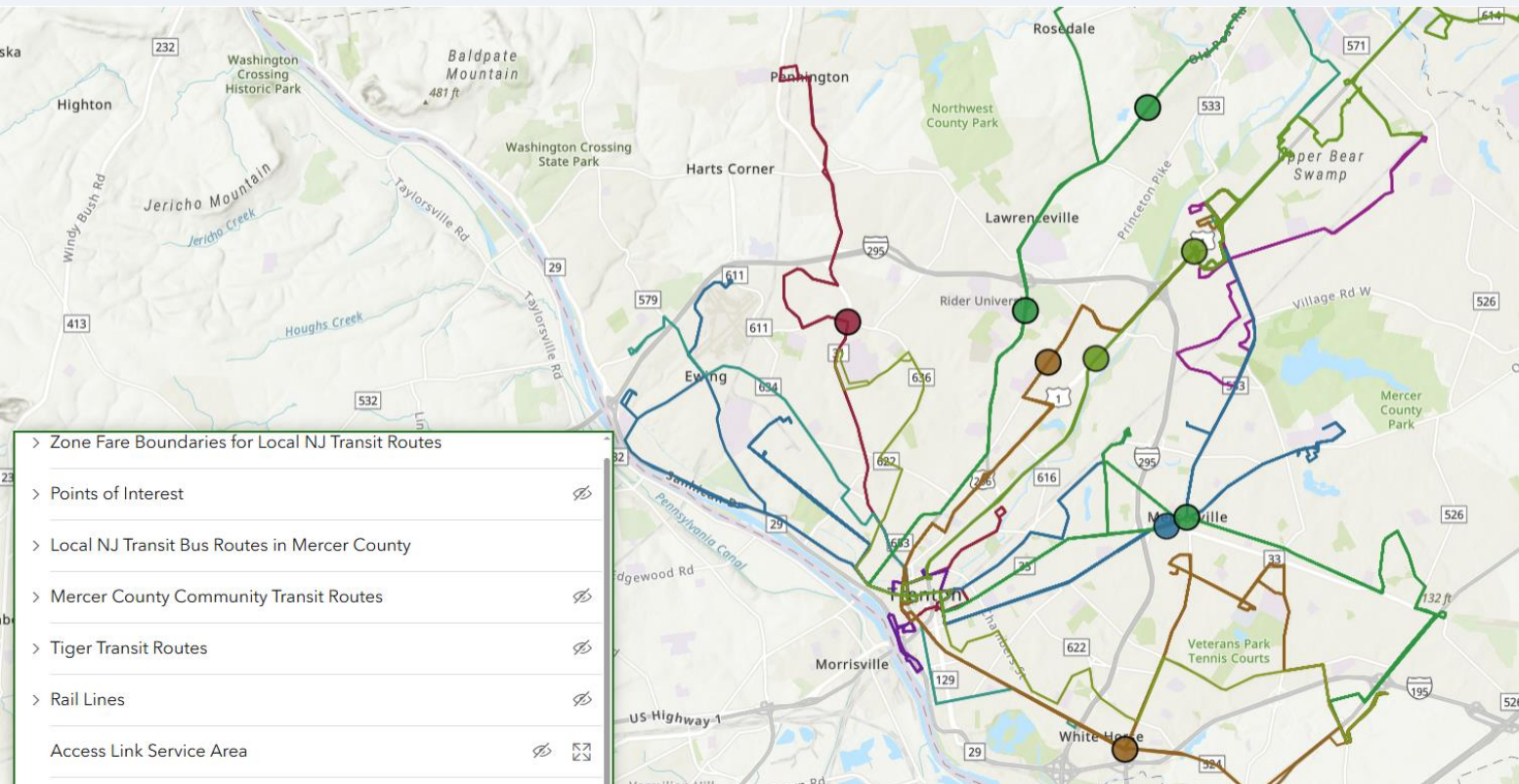
### TIMETABLES

Final Destination: NEWARK/NEW YORK Train Numbers

TO: NEWARK/NEW YORK MONDAY - FRIDAY

NOTE: Train with a \* before the path number are part of NJ TRANSIT's Quiet Car service.

Departing From	1	2	3	4	5	6	7	8	9	10	11	12	13	14	15	16	17	18	19	20	21	22	23	24	25	26	27	28	29	30	31	32	33	34	35	36	37	38	39	40	41	42	43	44	45	46	47	48	49	50	51	52	53	54	55	56	57	58	59	60	61	62	63	64	65	66	67	68	69	70	71	72	73	74	75	76	77	78	79	80	81	82	83	84	85	86	87	88	89	90	91	92	93	94	95	96	97	98	99	100																																																																																																																																																																																																																																																																																																																																																																																																																																																																																																																																																																																																																																																																																																																																																																																																															
Atlantic City	1:00	1:15	1:30	1:45	2:00	2:15	2:30	2:45	3:00	3:15	3:30	3:45	4:00	4:15	4:30	4:45	5:00	5:15	5:30	5:45	6:00	6:15	6:30	6:45	7:00	7:15	7:30	7:45	8:00	8:15	8:30	8:45	9:00	9:15	9:30	9:45	10:00	10:15	10:30	10:45	11:00	11:15	11:30	11:45	12:00	12:15	12:30	12:45	1:00	1:15	1:30	1:45	2:00	2:15	2:30	2:45	3:00	3:15	3:30	3:45	4:00	4:15	4:30	4:45	5:00	5:15	5:30	5:45	6:00	6:15	6:30	6:45	7:00	7:15	7:30	7:45	8:00	8:15	8:30	8:45	9:00	9:15	9:30	9:45	10:00	10:15	10:30	10:45	11:00	11:15	11:30	11:45	12:00	12:15	12:30	12:45	1:00	1:15	1:30	1:45	2:00	2:15	2:30	2:45	3:00	3:15	3:30	3:45	4:00	4:15	4:30	4:45	5:00	5:15	5:30	5:45	6:00	6:15	6:30	6:45	7:00	7:15	7:30	7:45	8:00	8:15	8:30	8:45	9:00	9:15	9:30	9:45	10:00	10:15	10:30	10:45	11:00	11:15	11:30	11:45	12:00	12:15	12:30	12:45	1:00	1:15	1:30	1:45	2:00	2:15	2:30	2:45	3:00	3:15	3:30	3:45	4:00	4:15	4:30	4:45	5:00	5:15	5:30	5:45	6:00	6:15	6:30	6:45	7:00	7:15	7:30	7:45	8:00	8:15	8:30	8:45	9:00	9:15	9:30	9:45	10:00	10:15	10:30	10:45	11:00	11:15	11:30	11:45	12:00	12:15	12:30	12:45	1:00	1:15	1:30	1:45	2:00	2:15	2:30	2:45	3:00	3:15	3:30	3:45	4:00	4:15	4:30	4:45	5:00	5:15	5:30	5:45	6:00	6:15	6:30	6:45	7:00	7:15	7:30	7:45	8:00	8:15	8:30	8:45	9:00	9:15	9:30	9:45	10:00	10:15	10:30	10:45	11:00	11:15	11:30	11:45	12:00	12:15	12:30	12:45	1:00	1:15	1:30	1:45	2:00	2:15	2:30	2:45	3:00	3:15	3:30	3:45	4:00	4:15	4:30	4:45	5:00	5:15	5:30	5:45	6:00	6:15	6:30	6:45	7:00	7:15	7:30	7:45	8:00	8:15	8:30	8:45	9:00	9:15	9:30	9:45	10:00	10:15	10:30	10:45	11:00	11:15	11:30	11:45	12:00	12:15	12:30	12:45	1:00	1:15	1:30	1:45	2:00	2:15	2:30	2:45	3:00	3:15	3:30	3:45	4:00	4:15	4:30	4:45	5:00	5:15	5:30	5:45	6:00	6:15	6:30	6:45	7:00	7:15	7:30	7:45	8:00	8:15	8:30	8:45	9:00	9:15	9:30	9:45	10:00	10:15	10:30	10:45	11:00	11:15	11:30	11:45	12:00	12:15	12:30	12:45	1:00	1:15	1:30	1:45	2:00	2:15	2:30	2:45	3:00	3:15	3:30	3:45	4:00	4:15	4:30	4:45	5:00	5:15	5:30	5:45	6:00	6:15	6:30	6:45	7:00	7:15	7:30	7:45	8:00	8:15	8:30	8:45	9:00	9:15	9:30	9:45	10:00	10:15	10:30	10:45	11:00	11:15	11:30	11:45	12:00	12:15	12:30	12:45	1:00	1:15	1:30	1:45	2:00	2:15	2:30	2:45	3:00	3:15	3:30	3:45	4:00	4:15	4:30	4:45	5:00	5:15	5:30	5:45	6:00	6:15	6:30	6:45	7:00	7:15	7:30	7:45	8:00	8:15	8:30	8:45	9:00	9:15	9:30	9:45	10:00	10:15	10:30	10:45	11:00	11:15	11:30	11:45	12:00	12:15	12:30	12:45	1:00	1:15	1:30	1:45	2:00	2:15	2:30	2:45	3:00	3:15	3:30	3:45	4:00	4:15	4:30	4:45	5:00	5:15	5:30	5:45	6:00	6:15	6:30	6:45	7:00	7:15	7:30	7:45	8:00	8:15	8:30	8:45	9:00	9:15	9:30	9:45	10:00	10:15	10:30	10:45	11:00	11:15	11:30	11:45	12:00	12:15	12:30	12:45	1:00	1:15	1:30	1:45	2:00	2:15	2:30	2:45	3:00	3:15	3:30	3:45	4:00	4:15	4:30	4:45	5:00	5:15	5:30	5:45	6:00	6:15	6:30	6:45	7:00	7:15	7:30	7:45	8:00	8:15	8:30	8:45	9:00	9:15	9:30	9:45	10:00	10:15	10:30	10:45	11:00	11:15	11:30	11:45	12:00	12:15	12:30	12:45	1:00	1:15	1:30	1:45	2:00	2:15	2:30	2:45	3:00	3:15	3:30	3:45	4:00	4:15	4:30	4:45	5:00	5:15	5:30	5:45	6:00	6:15	6:30	6:45	7:00	7:15	7:30	7:45	8:00	8:15	8:30	8:45	9:00	9:15	9:30	9:45	10:00	10:15	10:30	10:45	11:00	11:15	11:30	11:45	12:00	12:15	12:30	12:45	1:00	1:15	1:30	1:45	2:00	2:15	2:30	2:45	3:00	3:15	3:30	3:45	4:00	4:15	4:30	4:45	5:00	5:15	5:30	5:45	6:00	6:15	6:30	6:45	7:00	7:15	7:30	7:45	8:00	8:15	8:30	8:45	9:00	9:15	9:30	9:45	10:00	10:15	10:30	10:45	11:00	11:15	11:30	11:45	12:00	12:15	12:30	12:45	1:00	1:15	1:30	1:45	2:00	2:15	2:30	2:45	3:00	3:15	3:30	3:45	4:00	4:15	4:30	4:45	5:00	5:15	5:30	5:45	6:00	6:15	6:30	6:45	7:00	7:15	7:30	7:45	8:00	8:15	8:30	8:45	9:00	9:15	9:30	9:45	10:00	10:15	10:30	10:45	11:00	11:15	11:30	11:45	12:00	12:15	12:30	12:45	1:00	1:15	1:30	1:45	2:00	2:15	2:30	2:45	3:00	3:15	3:30	3:45	4:00	4:15	4:30	4:45	5:00	5:15	5:30	5:45	6:00	6:15	6:30	6:45	7:00	7:15	7:30	7:45	8:00	8:15	8:30	8:45	9:00	9:15	9:30	9:45	10:00	10:15	10:30	10:45	11:00	11:15	11:30	11:45	12:00	12:15	12:30	12:45	1:00	1:15	1:30	1:45	2:00	2:15	2:30	2:45	3:00	3:15	3:30	3:45	4:00	4:15	4:30	4:45	5:00	5:15	5:30	5:45	6:00	6:15	6:30	6:45	7:00	7:15	7:30	7:45	8:00	8:15	8:30	8:45	9:00	9:15	9:30	9:45	10:00	10:15	10:30	10:45	11:00	11:15	11:30	11:45	12:00	12:15	12:30	12:45	1:00	1:15	1:30	1:45	2:00	2:15	2:30	2:45	3:00	3:15	3:30	3:45	4:00	4:15	4:30	4:45	5:00	5:15	5:30	5:45	6:00	6:15	6:30	6:45	7:00	7:15	7:30	7:45	8:00	8:15	8:30	8:45	9:00	9:15	9:30	9:45	10:00	10:15	10:30	10:45	11:00	11:15	11:30	11:45	12:00	12:15	12:30	12:45	1:00	1:15	1:30	1:45	2:00	2:15	2:30	2:45	3:00	3:15	3:30	3:45	4:00	4:15	4:30	4:45	5:00	5:15	5:30	5:45	6:00	6:15	6:30	6:45	7:00	7:15	7:30	7:45	8:00	8:15	8:30	8:45	9:00	9:15	9:30	9:45	10:00	10:15	10:30	10:45	11:00	11:15	11:30	11:45	12:00	12:15	12:30	12:45	1:00	1:15	1:30	1:45	2:00	2:15	2:30	2:45	3:00	3:15	3:30	3:45	4:00	4:15	4:30	4:45	5:00	5:15	5:30



603/613 Zone Fare Boundaries



606 Zone Fare Boundaries



609/619 Zone Fare Boundaries



624 Zone Fare Boundaries



Local NJ Transit Bus Routes in Mercer County

600

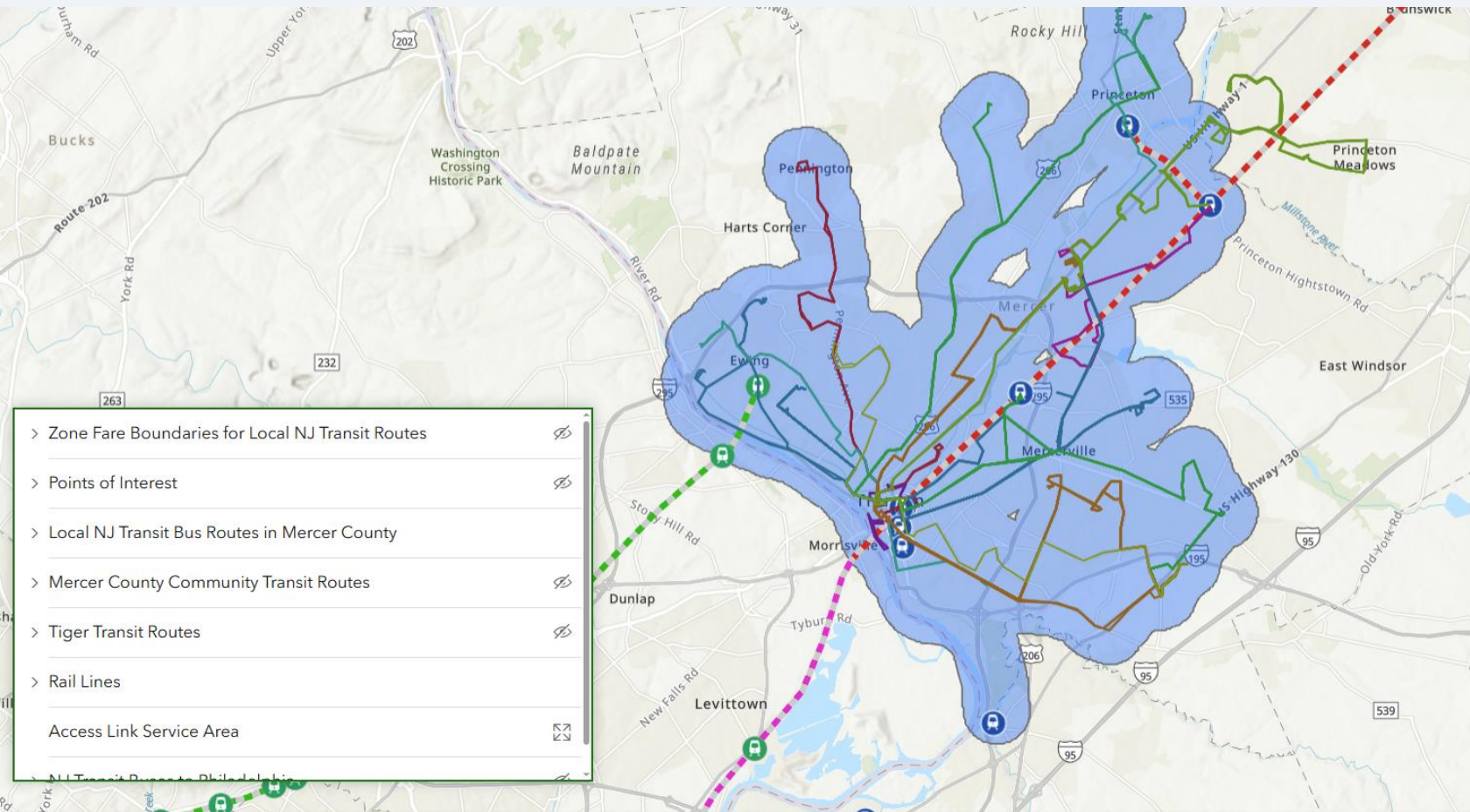


601



603/613





> Zone Fare Boundaries for Local NJ Transit Routes

> Points of Interest

> Local NJ Transit Bus Routes in Mercer County

> Mercer County Community Transit Routes

> Tiger Transit Routes

> Rail Lines

Access Link Service Area

603/613

605

606

607

608

609/619

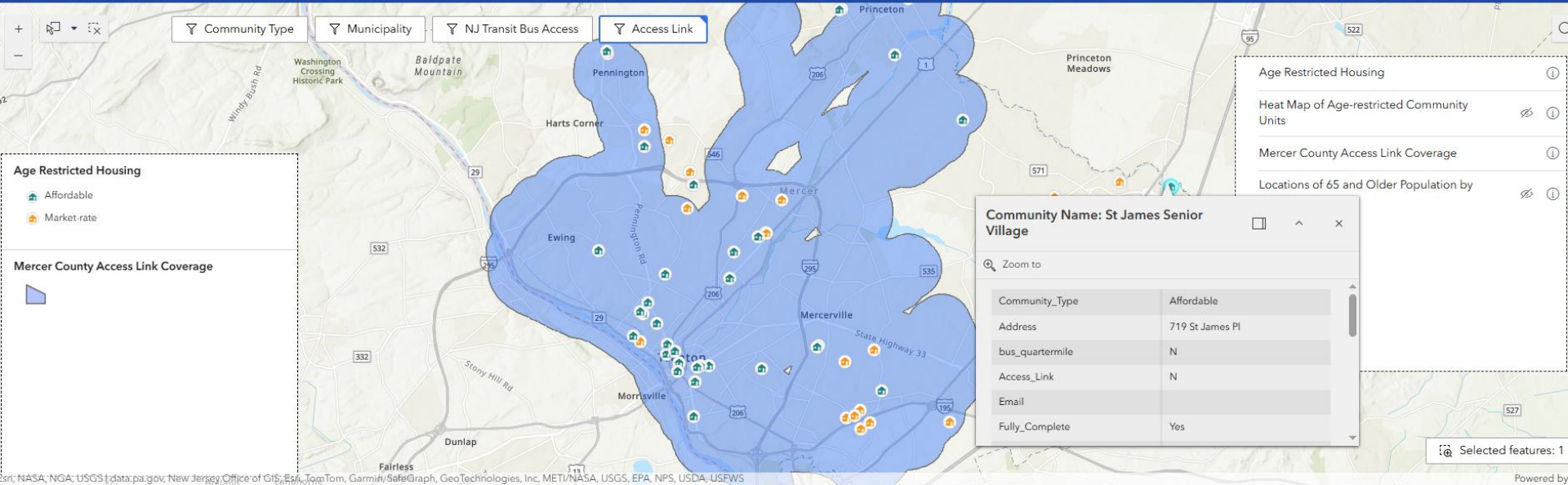
610

611

612



## Age-restricted Communities in Mercer County



Source: NASA, NGA, USGS | data.pa.gov, New Jersey Office of GIS, Esri, TomTom, Garmin/SafeGraph, GeoTechnologies, Inc, METI/NASA, USGS, EPA, NPS, USDA, USEFWS

Powered by

Name	Address	Municipality	Phone	Email	Website	Community_Type	House_Type	Units	Home_Val
Carriage Park at Lawrenceville	3000 Coits Circle	Lawrence Township				Market-rate	Apartment		Rental
Enchantment at Hamilton	2 Sedona Blvd	Hamilton Township	(732) 390-1100		<a href="#">View</a>	Market-rate	Single-Family	232.000000	Low \$400s
Evergreen at Hamilton	30 Clubhouse Dr Hamilton...	Hamilton Township	(609) 584-2460	evergreenhoa@outlook.com	<a href="#">View</a>	Market-rate	Single-Family	416.000000	Mid \$200s
Woodlands at Hamilton	1 Mowat Cir Hamilton Tow...	Hamilton Township	(609) 587-8142			Market-rate	Condominium	139.000000	Low \$200s





## TRAVEL INSTRUCTION 101

### Hamilton Township Senior Center

#### EVERYTHING YOU NEED TO KNOW TO GET AROUND

**Part 1 Classroom**  
where you'll learn everything you need to know on how to ride the bus and train! From planning transit trips to fare information to available bus and community transportation services; we'll give you the tools to get you on your way.

**Part 2 Field Trip (Optional)**  
After a brief review of what we learned the week before, it's time to put our plans in motion. We'll board the bus and travel to a favorite restaurant where we'll enjoy a free lunch. You must attend Part 1 to participate in Part 2.

**HAMILTON TOWNSHIP SENIOR CENTER**  
409 Cypress Lane  
Hamilton, NJ  
Date: Wednesday, May 24 at 10:00 AM

**Presented by**  
Greater Mercer TMA

**CONTACT US**  
15 Roszel Rd #101,  
Princeton, NJ 08540  
(609) 452-1491  
<https://gmtma.org/>






## Maps, Apps And You!

Oh, the places you'll go. Navigating your Transportation options

Learn to use technology to get around how and when you want

### Hopewell Valley Seniors

August 1, 2025 at 10:00AM  
Hopewell Township Municipal Building

**Presented by Greater Mercer TMA**  
Steve daCosta & Carol Chamberlain




**609-452-1491**

**GREATER MERCER TMA**  
Discover Greater Mercer

## ACCESS TO WELLNESS

Remove transportation barriers to make wellness more accessible

**SAVE THE DATE**

**WEDNESDAY**  
September 17, 2025

**TIME:**  
09:00AM - NOON

**RWJ Fitness & Wellness Center,**  
Hamilton

**FOR MORE INFORMATION:**  
[tma@gmtma.org](mailto:tma@gmtma.org)  
609-452-1491

### FOR SOCIAL SERVICE & HEALTHCARE PROFESSIONALS

- Case Managers
- Community Health Workers
- Social Workers
- Outreach Coordinators

### Become a knowledgeable transportation resource for your clients.

**Topics will include:**

- Available services in Mercer County
- Transit mobile apps
- Trip planning tools
- Services for specific municipalities
- Accessible features for seniors and people with disabilities
- And more!

**REGISTRATION AND WORKSHOP**  
DETAILS COMING SOON!

**GREATER MERCER TMA**  
Discover Greater Mercer

**RWJ Barnabas HEALTH**  
Robert Wood Johnson University Hospital Hamilton



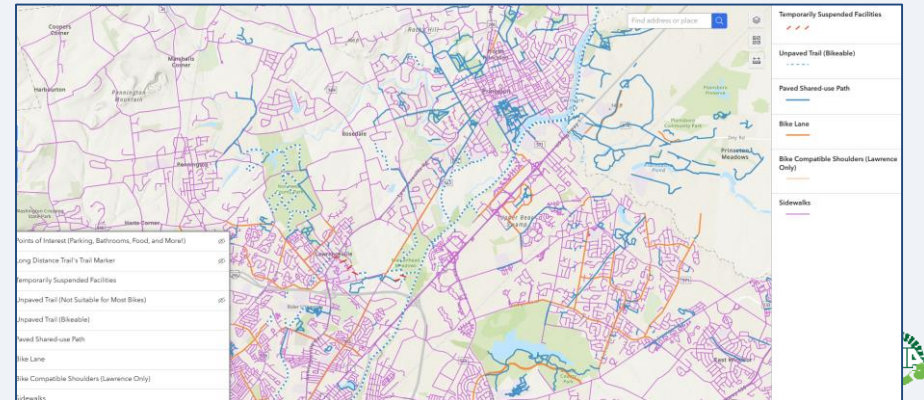
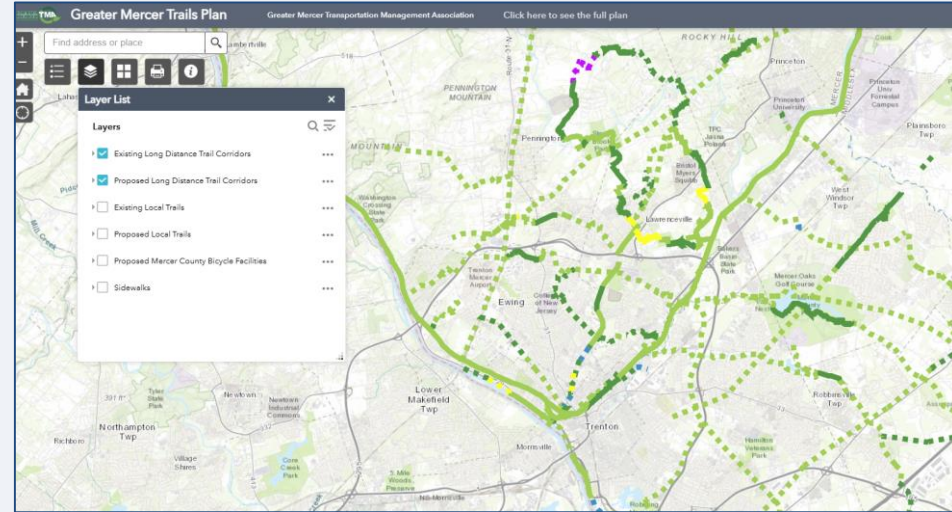
## Closing the Gap

- Complete Streets
- Trail Connections
- Last mile services
  - ZLine
  - Princeton Muni
  - GoTrenton!
  - Via Jersey City
- Bike Parking
  - Bike Lockers – Princeton Junction, Hamilton, Point Pleasant
- Bikeshare





- Greater Mercer Trails Plan
- Bike Walk Maps
  - Lawrence
  - West Windsor
- DVRPC Sidewalk Inventory



# Questions?

**Cheryl Kastrenakes**

Executive Director

[ckastrenakes@gmtma.org](mailto:ckastrenakes@gmtma.org)